

ERRATUM

Mitt. Ges. Geol. Bergbaustud. Österr. 45 (2001)

Zur stratigraphischen Einstufung von Kiesersedimenten im Bereich des Sandling (Nördliche Kalkalpen, Callovium-Oxfordium)

Stratigraphy of cherty sediments in the Sandling area (Northern Calcareous Alps, Callovian-Oxfordian)

Von

EVA WEGERER, HISASHI SUZUKI & HANS-JÜRGEN GAWLICK

Schlüsselwörter:

*Mittel- bis Ober-Jura
Radiolarit
Radiolarien
Brekzien
Nördliche Kalkalpen
Hallstätter Zone
Stratigraphie und Fazies
Strubbergsschichten
Oxfordium*

Keywords:

*Middle to Late Jurassic
Radiolarite
Radiolarians
Mass-flow deposits
Northern Calcareous Alps
Hallstatt Zone
Stratigraphy and Facies
Strubberg Formation
Oxfordian*

Anschriften der Verfasser, addresses of the authors:

EVA WEGERER, HISASHI SUZUKI, HANS-JÜRGEN GAWLICK

Montanuniversität Leoben

Institut für Geowissenschaften: Prospektion und Angewandte Sedimentologie

Peter-Tunner-Straße 5

8700 Leoben

Österreich.

Mitt. Ges. Geol. Bergbaustud. Österr.

46

S. 229-237

Wien 2003

Abb. 4a: Radiolarien aus den kalkigen, rot-violetten Radiolariten am Forstweg zur Knerzenalm (*1 in Abb. 2, Probe EW 191). U.A.-Zone 7 oder 8, wahrscheinlich Callovium.

1. *Parvicingula* sp.
2. *Archaeodictyomitra mitra* DUMITRICA 1997
3. *Archaeodictyomitra rigida* PESSAGNO 1977
4. *Cinguloturris carpatica* DUMITRICA 1982
5. *Williriedellum carpathicum* DUMITRICA 1970
6. *Eucyrtidiellum ptyctum* (RIEDEL & SANFILIPPO 1974)
7. *Hsuum altile* HORI & OTSUKA 1989
8. *Hsuum maxwelli* Pessagno 1977
9. *Pseudodictyomitrella spinosa* GRILL & KOZUR 1986
10. *Wrangellium okamurai* (MIZUTANI 1981)
11. *Syringocapsa* cf. *inflata* (YEH 1987)
12. *Stichomitra annibill* KOCHER 1981
13. *Stichomitra tairai* AITA 1987
14. *Triversus japonicus* TAKEMURA 1986
15. *Zhamoidellum ovum* DUMITRICA 1970
16. *Tricolocapsa funatoensis* (AITA 1987)
17. *Acotripus* cf. *sphaericus* OZVOLDOVA 1988
18. *Stylocapsa oblongula* KOCHER 1981
19. *Unuma gorda* HULL 1997

Fig. 4a: Radiolarians of the reddish radiolarites from the road to the Knerzenalm (*1 in Fig. 2, sample EW 191). U.-A.-Zone 7-8, probably Callovian.

1. *Parvicingula* sp.
2. *Archaeodictyomitra mitra* DUMITRICA 1997
3. *Archaeodictyomitra rigida* PESSAGNO 1977
4. *Cinguloturris carpatica* DUMITRICA 1982
5. *Williriedellum carpathicum* DUMITRICA 1970
6. *Eucyrtidiellum ptyctum* (RIEDEL & SANFILIPPO 1974)
7. *Hsuum altile* HORI & OTSUKA 1989
8. *Hsuum maxwelli* Pessagno 1977
9. *Pseudodictyomitrella spinosa* GRILL & KOZUR 1986
10. *Wrangellium okamurai* (MIZUTANI 1981)
11. *Syringocapsa* cf. *inflata* (YEH 1987)
12. *Stichomitra annibill* KOCHER 1981
13. *Stichomitra tairai* AITA 1987
14. *Triversus japonicus* TAKEMURA 1986
15. *Zhamoidellum ovum* DUMITRICA 1970
16. *Tricolocapsa funatoensis* (AITA 1987)
17. *Acotripus* cf. *sphaericus* OZVOLDOVA 1988
18. *Stylocapsa oblongula* KOCHER 1981
19. *Unuma gorda* HULL 1997

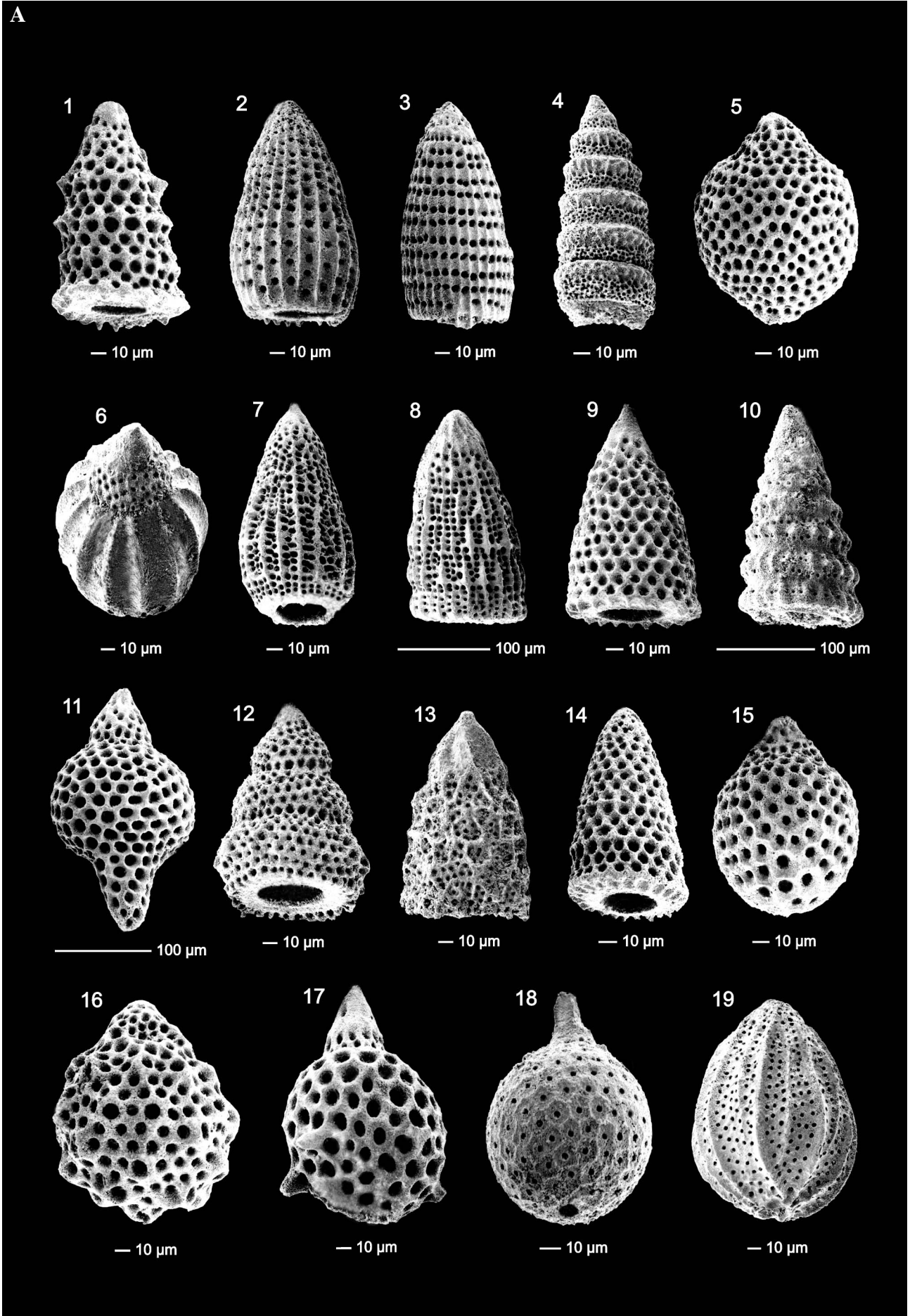


Abb. 4b: Radiolarien aus den kalkigen, rot-violetten Radiolariten am Forstweg zur Knerzenalm (*1 in Abb. 2, Probe EW 191). U.A.-Zone 7 oder 8, wahrscheinlich Callovium.

1. *Gongylothorax* sp.
2. *Stichocapsa convexa* YAO 1979
3. *Dictyomitrella* sp.
4. *Triversus* sp.
5. *Archaeodictyomitra* sp. B
6. *Parvicingula dhimenaensis* BAUMGARTNER 1984
7. *Cinguloturris latiannulata* (GRILL & KOZUR 1986)
8. *Syringocapsa* sp.
9. *Pseudoristola* sp.
10. *Gorgansium* sp.
11. *Stichomitra* sp.
12. *Hsuum* sp.
13. *Eucyrtidiellum nodosum* WAKITA 1988
14. *Saitoum* sp.
15. *Tricolocapsa* sp.
16. *Protunuma japonicus* MATSUOKA & YAO 1985
17. *Xitus* sp.

Fig. 4b: Radiolarians of the reddish radiolarites from the road to the Knerzenalm (*1 in Fig. 2, sample EW 191). U.-A.-Zone 7-8, probably Callovian.

1. *Gongylothorax* sp.
2. *Stichocapsa convexa* YAO 1979
3. *Dictyomitrella* sp.
4. *Triversus* sp.
5. *Archaeodictyomitra* sp. B
6. *Parvicingula dhimenaensis* BAUMGARTNER 1984
7. *Cinguloturris latiannulata* (GRILL & KOZUR 1986)
8. *Syringocapsa* sp.
9. *Pseudoristola* sp.
10. *Gorgansium* sp.
11. *Stichomitra* sp.
12. *Hsuum* sp.
13. *Eucyrtidiellum nodosum* WAKITA 1988
14. *Saitoum* sp.
15. *Tricolocapsa* sp.
16. *Protunuma japonicus* MATSUOKA & YAO 1985
17. *Xitus* sp.

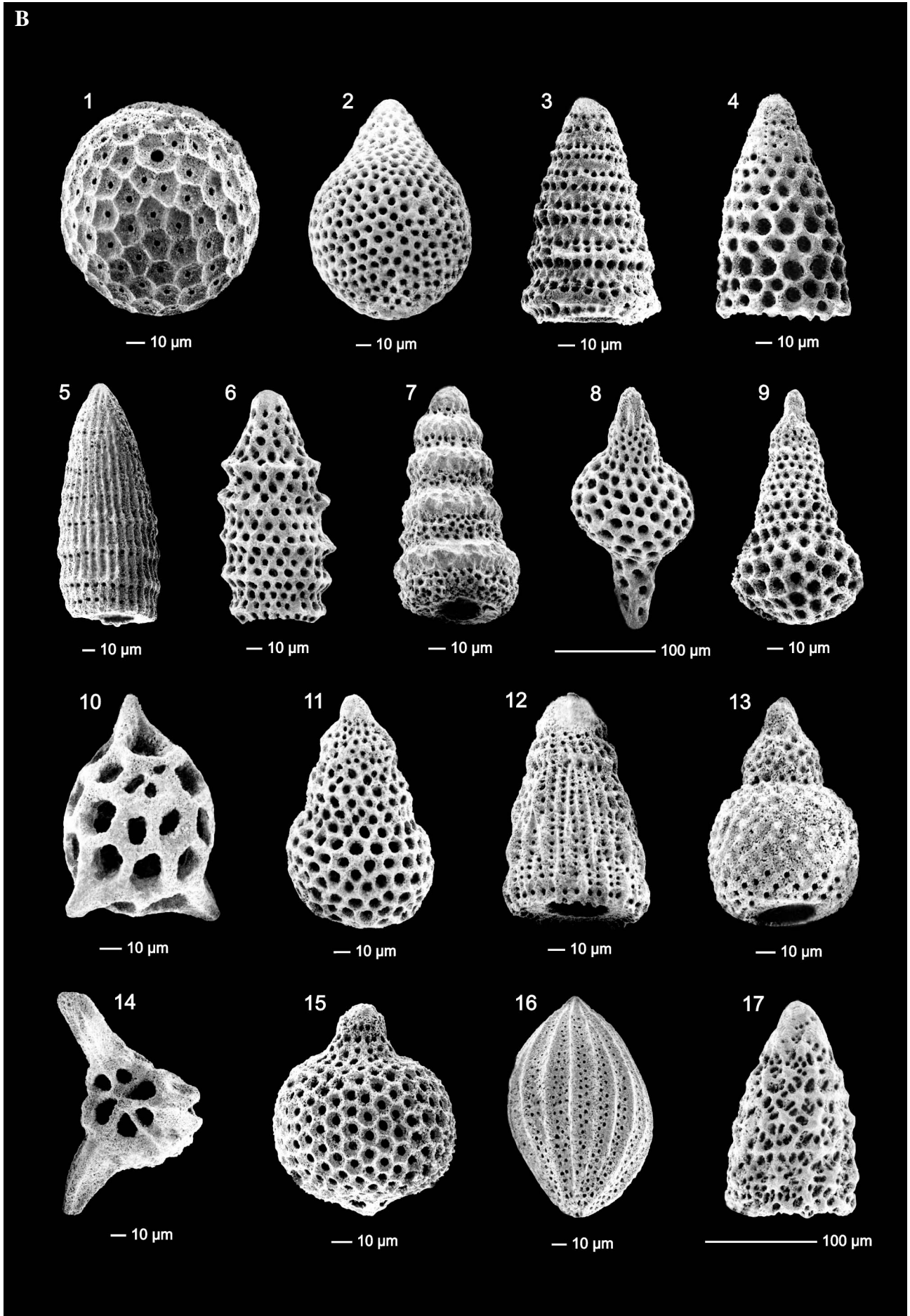


Abb. 5: Radiolarien aus den kalkigen Radiolariten am Forstweg zur Knerzenalm (*1 in Abb. 2, Probe EW 192). U.A.-Zone 7-8, Callovium bis Unter-Oxfordium.

1. *Parvicingula* sp.
2. *Zhamoidellum ovum* DUMITRICA 1970
3. *Williriedellum crystallinum* DUMITRICA 1970
4. *Williriedellum carpathicum* DUMITRICA 1970
5. *Parahsuum* sp. S MATSUOKA 1986
6. *Pseudodictyomitra* sp. D MATSUOKA 1986
7. *Hsuum brevicostatum* (OZVOLDOVA 1975)
8. *Archaeodictyomitra rigida* PESSAGNO 1977
9. *Wrangellium okamurai* (MIZUTANI 1981)
10. *Tricolocapsa funatoensis* (AITA 1987)
11. *Protunuma japonicus* MATSUOKA & YAO 1985
12. *Eucyrtidiellum unumaense* (YAO 1979)
13. *Acotripus* cf. *sphaericus* OZVOLDOVA 1988
14. ?*Gongylothorax* cf. *favosus* DUMITRICA 1970
15. *Hsuum maxwelli* PESSAGNO 1977
16. *Gigi* sp.
17. *Tritrabs* sp.

Fig. 5: Radiolarians of the radiolarites from the road to the Knerzenalm (*1 in Fig. 2, sample EW 192). U.-A.-Zone 7-8, Callovian to Lower Oxfordian.

1. *Parvicingula* sp.
2. *Zhamoidellum ovum* DUMITRICA 1970
3. *Williriedellum crystallinum* DUMITRICA 1970
4. *Williriedellum carpathicum* DUMITRICA 1970
5. *Parahsuum* sp. S MATSUOKA 1986
6. *Pseudodictyomitra* sp. D MATSUOKA 1986
7. *Hsuum brevicostatum* (OZVOLDOVA 1975)
8. *Archaeodictyomitra rigida* PESSAGNO 1977
9. *Wrangellium okamurai* (MIZUTANI 1981)
10. *Tricolocapsa funatoensis* (AITA 1987)
11. *Protunuma japonicus* MATSUOKA & YAO 1985
12. *Eucyrtidiellum unumaense* (YAO 1979)
13. *Acotripus* cf. *sphaericus* OZVOLDOVA 1988
14. ?*Gongylothorax* cf. *favosus* DUMITRICA 1970
15. *Hsuum maxwelli* PESSAGNO 1977
16. *Gigi* sp.
17. *Tritrabs* sp.

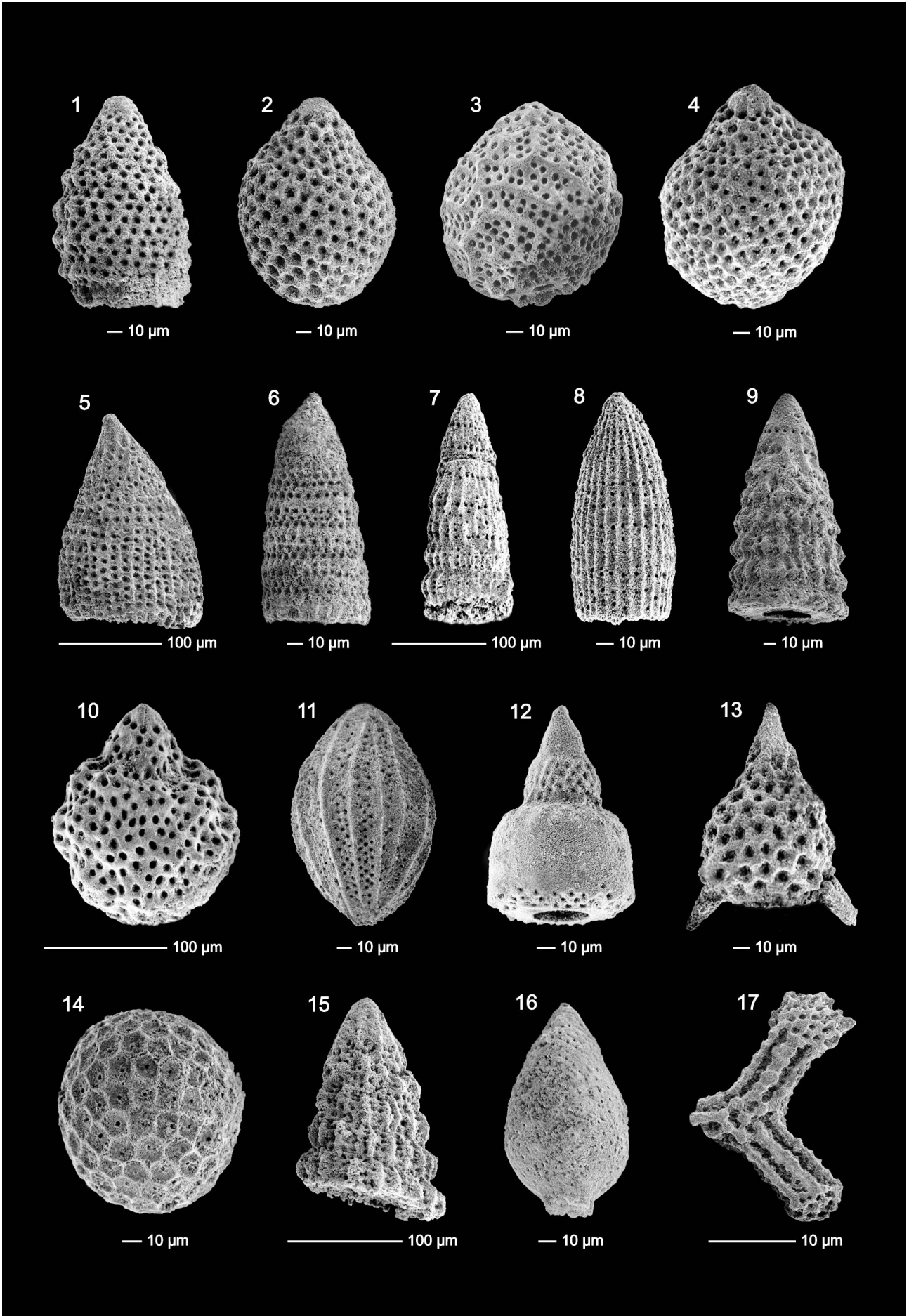


Abb. 6: Radiolarien aus den kalkigen rot-violetten Radiolariten am Forstweg zur Knerzenalm (*1 in Abb. 2, Probe EW 193). U.A.-Zone (6)-7, wahrscheinlich Unter-Callovium.

1. *Stichocapsa* cf. *naradaniensis* MATSUOKA 1984
2. *Gongylothorax* sp.
3. *Stylocapsa oblongula* KOCHER 1981
4. *Stichocapsa* sp.
5. *Pseudodictyomitra* sp. D MATSUOKA 1986
6. *Dictyomitrella* sp.
7. *Pseudodictyomitra* sp.
8. *Eucyrtidiellum unumaense* (YAO 1979)
9. *Triversus* sp.
10. *Striatojaponicapsa* sp. B HULL 1997
11. *Tricolocapsa conexa* MATSUOKA 1983
12. *Tricolocapsa* cf. *ruesti* TAN 1927
13. *Theocapsomma* sp.
14. *Tricolocapsa* sp. A OZVOLDOVA 1992
15. *Unuma gorda* HULL 1997
16. *Hiscocapsa* sp.
17. *Tricolocapsa funatoensis* (AITA 1987)

Fig. 6: Radiolarians of the reddish radiolarites from the road to the Knerzenalm (*1 in Fig. 2, sample EW 193). U.-A.-Zone (6)-7, ?early Callovian.

1. *Stichocapsa* cf. *naradaniensis* MATSUOKA 1984
2. *Gongylothorax* sp.
3. *Stylocapsa oblongula* KOCHER 1981
4. *Stichocapsa* sp.
5. *Pseudodictyomitra* sp. D MATSUOKA 1986
6. *Dictyomitrella* sp.
7. *Pseudodictyomitra* sp.
8. *Eucyrtidiellum unumaense* (YAO 1979)
9. *Triversus* sp.
10. *Striatojaponicapsa* sp. B HULL 1997
11. *Tricolocapsa conexa* MATSUOKA 1983
12. *Tricolocapsa* cf. *ruesti* TAN 1927
13. *Theocapsomma* sp.
14. *Tricolocapsa* sp. A OZVOLDOVA 1992
15. *Unuma gorda* HULL 1997
16. *Hiscocapsa* sp.
17. *Tricolocapsa funatoensis* (AITA 1987)

